



ALLIANCE™

[.https://debug.globalseafood.org](https://debug.globalseafood.org)Health &  
Welfare

# Molecular biology tools applied to selection programs

1 December 1999

By Sam Stern and Leonardo Galli

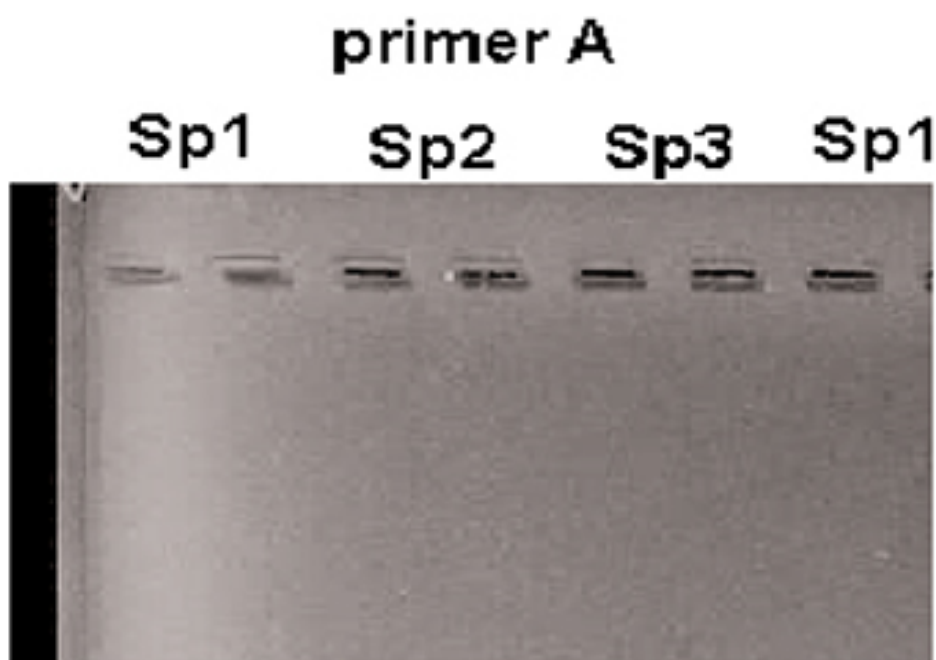
## Searching for genetic markers

Selective breeding is a process which strives to select organisms bearing genes for preferred traits such as rapid growth, disease resistance and fecundity. The decision of which offspring to select for the next generation may require that organisms be reared to adulthood or that they be screened using elaborate testing procedures such as disease challenges or reproduction trials. With the advent of “marker-assisted” breeding, the selection process can be greatly accelerated by using genetic markers of observed phenotypic traits to select organisms at a young age without the need for phenotypic screening tests. This can increase the selection intensity and reduce the cost of a selective breeding program.

A prerequisite for marker-assisted breeding is identification of genetic markers for phenotypic traits of interest. The genetic marker need not be the specific gene responsible for a particular phenotypic trait, but it should be linked to it. In practice, this means that the marker is found together with the specific gene when the organism’s DNA is fragmented. This implies that the marker is located in close proximity to the specific gene, or at least on the same chromosome.

The process of searching for markers involves the following steps:

- Fragmenting the DNA using restriction enzymes,
- Amplifying the DNA using PCR technology (PCR is a molecular biology technique that copies DNA fragments, increasing the initial number of fragments millions of times. A detailed explanation of PCR is available in the previous issue of this magazine, Vol. 2, Issue 4/5),
- Loading the DNA at the base of an electrophoretic gel,
- Applying an electric current to the gel to stimulate the negatively charged DNA fragments to migrate toward the positive pole,
- Staining the gel to identify the location of various DNA fragments, and
- Noting the bands created by faster migration of the smaller (lower molecular weight) fragments and slower migration of the larger fragments (Fig. 1).



Usually many samples from different animals are run side-by-side on a gel. The vertical bands that form in the gel can be

Fig. 1: Gel photography. Possible markers for these families are indicated in the yellow frames.

compared among samples. Bands that are common for all samples are called “monomorphic” and bands that are present in some animals but do not exist in others are called “polymorphic.” Polymorphic bands are potential “markers.”

There are many molecular biology techniques useful for finding these markers. The following is a presentation of three methods.

## Random amplified polymorphic DNA (RAPD)

This techniques utilizes a special Polymerase Chain Reaction (PCR) named AP-PCR (arbitrary Primed). RAPD can be run without pre-existing DNA sequence information. Only a single arbitrary primer is used, and the amplified fragments are genoma segments flanked by two complementary primer-binding sites in inverted orientation (Fig. 2). If the binding primer site has a modification in the sequence (mutation,



Fig. 2: RAPD uses a single primer (red), this primer bind to complementary sequences in DNA, and PCR produces a fragment amplification. The sizes of these fragments depend of the distance between to primers fixed in opposite strands.

deletion, insertion, etc.), the primer does not bind in this place and will produce a variation in the size of the band.

A set of primers is screened for reproducible polymorphisms. Different primers may identify different polymorphisms and have different reproducibility. Polymorphic bands may be potential genetic markers.

## Amplified fragment length polymorphism (AFLP)

The genomic DNA is digested with two restriction enzymes (restriction enzyme cut double-stranded DNA into specific sequences characteristic to each enzyme). One enzyme can cut a DNA sequence in a few select points, while another enzyme can cut the sequences in more places. Adapters (made of synthetic DNA) are ligated to the “sticky ends” of the genomic DNA, complementary to those of the restriction site (Fig. 3).

This results in the formation of a “hybrid” molecule, adapter-DNA-adapter. Since the sequences of the end fragments are known, we can elaborate primers that anneal (hybridize) to the ends’ fragments. This DNA segment is then used as a template for the PCR reaction. The PCR products are separated on polyacrylamide gels, and the study of the bands is similar to that described in the RAPD technique. This technique, however, produces more bands than the RAPD and its results are more reproducible.

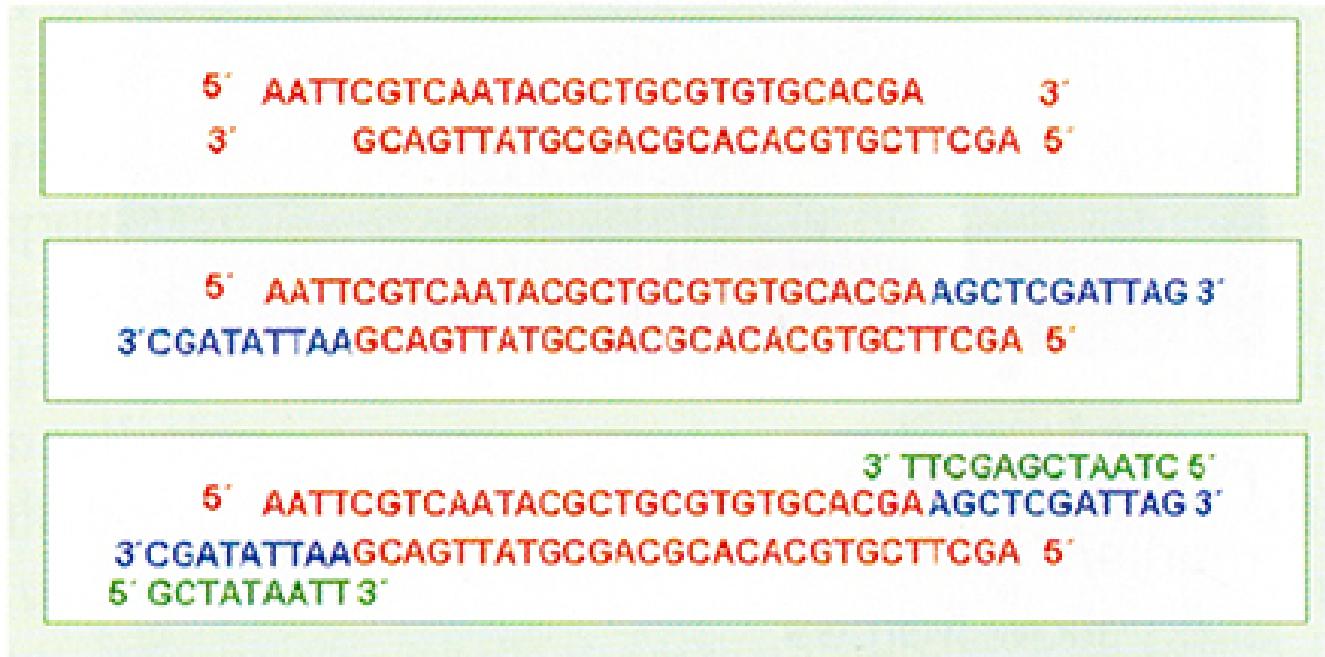


Fig. 3: Double strand of DNA with “sticking” ends, generated by enzyme digestion (red). Adapters binds to complementary sticking ends (blue). Primers (green) used in PCR reaction, fix to complementary sequence of adapters, and generate the amplification of this fragment.

## Microsatellites

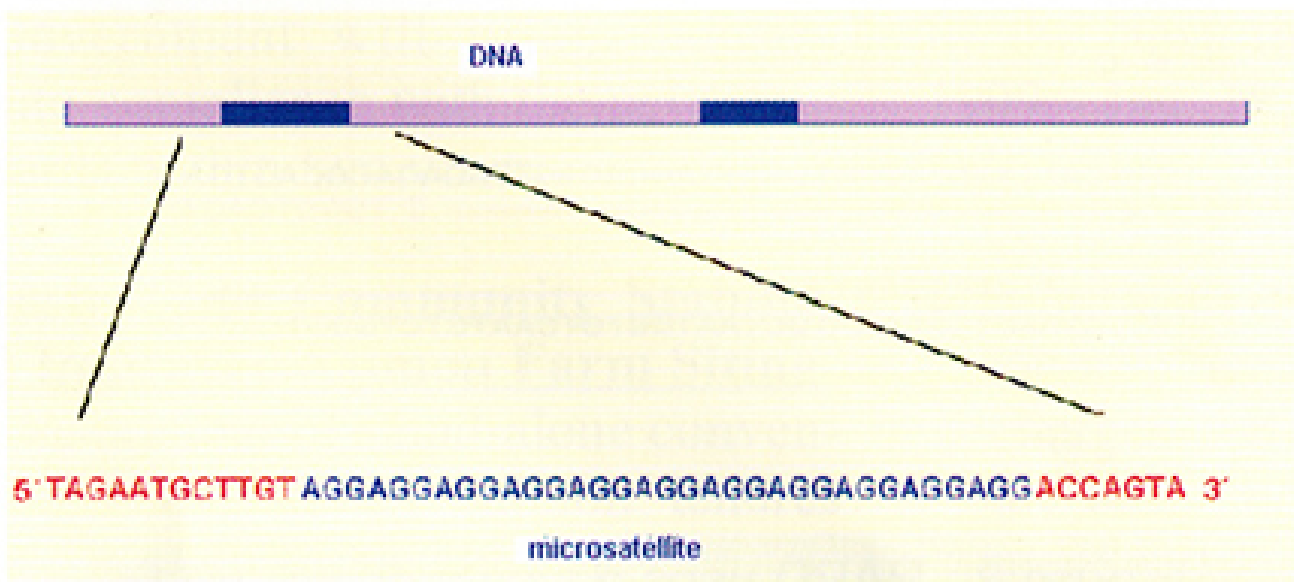


Fig. 4: Microsatellites (blue) are repetitive sequences of non-coding region, the flanking regions (red) are characteristic for each microsatellite and can be primed for PCR amplification.

Microsatellites are repeated, non-coding sequences of DNA (do not correspond to genes), and are of variable length. Microsatellite variation can be detected by PCR using primers flanking the repeated DNA sequences (Fig. 4). There are two ways to identify microsatellite loci. One method is by searching through DNA sequence databases for sequences containing simple repeats.

Primers are then designed directly from the sequence data. The second approach is to digest the entire DNA and clone the fragments into a vector. The correct clone is identified using a probe. The DNA fragment is re-isolated from the clone in order to sequence the fragment. With luck, all of the microsatellite sequences with its flanking regions are determined. The primers are designed and the DNA extraction is submitted to the PCR, and then visualized electrophoretically.

Once the microsatellite markers are established, the utility of the marker is high. Fig. 5 shows the variation in the microsatellite sequence and its development in a gel. Different individuals within a given population have the same microsatellite (same sequence repeat), but the length of the sequence is different among these individuals. All possess the same flanking sequences and the specific primers will bind these flanking sites, but the fragment length obtained in the PCR will be different. It is these differences in length (and weight) which generate characteristic patterns of each individual.

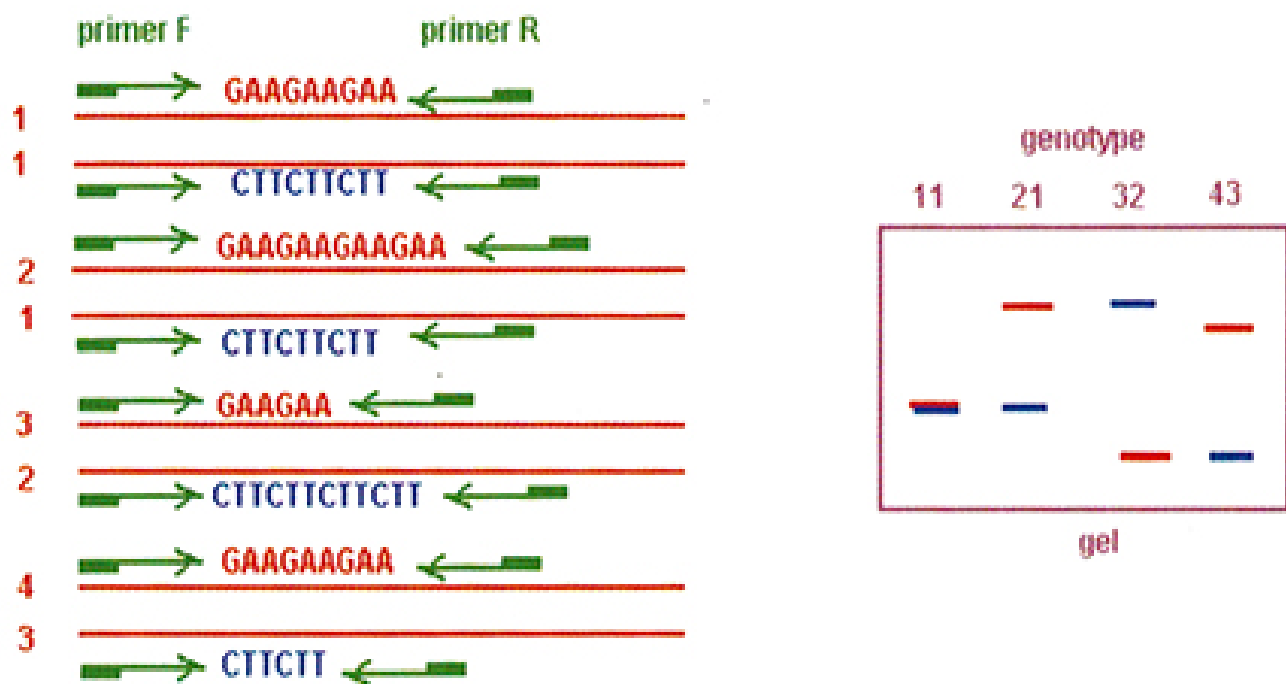


Fig. 5: (a) Utilization of the same primers set (green arrows) in different individuals. All the individuals have the same microsatellite (represented by red and blue letters) flanked by the same sequence, but the length is different in each animal and may be different in homologous chromosomes of the same individual. (b) Schematic representation of a gel from chart (a).

From this brief description, it should be apparent that many of these new molecular biology technologies are not for everyone due to their complexity and cost. When embarking on a genetic selection program, it is strongly recommended to consider one or several of these tools. This, however, requires a commitment of both human and material resources in order to make the effort worth while.

*(Editor's Note: This article was originally published in the December 1999 print edition of the Global Aquaculture Advocate.)*

## Authors

---



### **SAM STERN**

Desarrollo Industrial Bioacuatico (S.A.)  
A subsidiary of Conti Group Co.  
Ecuador

[sstern@dibsa.com.ec](mailto:sstern@dibsa.com.ec) (<mailto:sstern@dibsa.com.ec>).



### **LEONARDO GALLI**

Desarrollo Industrial Bioacuatico (S.A.)  
A subsidiary of Conti Group Co.  
Ecuador

Copyright © 2023 Global Seafood Alliance

All rights reserved.